



Detection of pharmaceuticals and their transformation products in seawaters using off-line solid phase extraction and liquid chromatography-high resolution mass spectrometry

Aggeliki Kalogeropoulou*, , Christina Kosma , Triantafyllos Albanis

Department of Chemistry, University of Ioannina, 45110 Ioannina, Greece

***Correspondence:** Aggeliki Kalogeropoulou, Department of Chemistry, University of Ioannina, 45110 Ioannina, Greece.

aggelkal@chem.auth.gr

Academic Editor: Claudia Zoani, C.R. Casaccia, Italy

Received: June 28, 2024 **Accepted:** November 8, 2024 **Published:** November 29, 2024

Cite this article: Kalogeropoulou A, Kosma C, Albanis T. Detection of pharmaceuticals and their transformation products in seawaters using off-line solid phase extraction and liquid chromatography-high resolution mass spectrometry. *Explor Foods Foodomics*. 2024;2:767–87. <https://doi.org/10.37349/eff.2024.00061>

Abstract

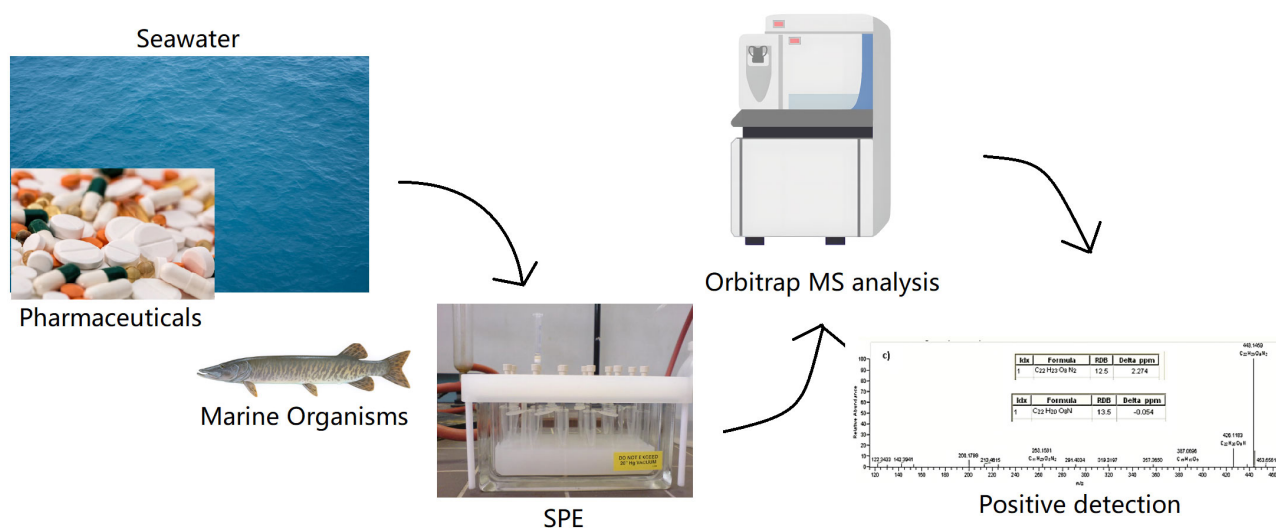
Aim: Fast urbanization of free land, industrial progress, and improvement of human life quality, have led to increased consumption of different chemical substances recognized as emerging contaminants (ECs) that are chemicals posing potential risks to the environment and human health, but are not yet subjected to regulatory criteria. Pharmaceuticals consumed by humans are continuously discharged into aquatic environments through urban effluents and numerous classes of them have been widely detected in surface waters. We have to highlight that pharmaceuticals, deposited in the aquatic environment end up in human body through the consumption of marine organisms. Consequently, seawater can be considered as feed. Aim of the study is the development, optimization and validation of a multi-residue analytical method concerning the detection of pharmaceuticals in seawaters.

Methods: The present study describes the development of a highly selective and sensitive analytical method using solid phase extraction (SPE) followed by UHPLC-LTQ/Orbitrap MS for the determination of 18 frequently prescribed pharmaceuticals and 3 transformation products (TPs) in seawater. In order to optimize the extraction method different cartridge types were tested.

Results: Main results showed that the appropriate type of sorbent was concluded to be Oasis HLB, which presented the highest recoveries fluctuating between 61.6% and 118.8%, with a relative standard deviation below 4% and below 5%, for intra-day and inter-day precision, respectively. Limits of detection (LODs) ranged from 0.3 ng L⁻¹ for venlafaxine to 9.8 ng L⁻¹ for oxolinic acid, and the limits of quantification (LOQs) ranged from 1.2 ng L⁻¹ for carbamazepine to 26.4 ng L⁻¹ for oxolinic acid, while in all cases, the linearity, as measured by the correlation coefficient, was greater than 0.991 and ranged within the method's quantification limit for each chemical and 1,000 ng L⁻¹.

Conclusions: Concerning the conclusions positive detections were found in the seawater samples for oxytetracycline, sulfadiazine, caffeine, paracetamol, and trimethoprim.





Graphical abstract. Pharmaceuticals deposited in the aquatic environment end up in marine organisms

Keywords

Emerging contaminants, seawater, solid phase extraction, UHPLC-LTQ/Orbitrap MS, aquaculture

Introduction

The following section refers to the emerging contaminants (ECs), their presence in the aquatic ecosystem as well as its chemical properties, the consequences in human health and their influence in the food chain. Moreover, the multi-residue analytical method is given in brief, the knowledge gaps and the future perspectives. In recent years, an increasing number of scientific studies have focused on environmental pollution. According to the European Union (EU) and the United States Environmental Protection Agency (USEPA) many pharmaceuticals and personal care products (PPCPs) are listed as priority pollutants [1–3]. These chemical substances are recognized as ECs, because of their global use, their physicochemical properties, their incomplete elimination in sewage treatment plants (STPs) and their pseudo-persistent characteristics [1, 3–17]. ECs are pharmaceuticals that are a potential threat to aquatic ecosystems, wildlife and even to human health [18–26]. As a result, long-term attention should be paid to their ability to bioaccumulate in water, sediment, or biota in marine environments, as well as to the toxicity of their transformation products (TPs) [27–29]. ECs, which are deposited in the aquatic environment may end up in the human body through the consumption of the relevant commodities. As a result, sea water can be considered as a possible contributor to food contamination [30]. ECs include several classes of pharmaceuticals such as antibiotics, non-steroidal, anti-inflammatory drugs, β -blockers, antipsychotics, cholesterol-lowering drugs, anticonvulsants, hormones, alkyl phenols, plasticisers, pesticides, PPCPs, phthalates, and artificial sweeteners which are commonly identified in surface waters close to major cities around the world [31–36]. Many PPCPs cause bacterial resistance [10, 37–42], exhibit acute toxicity [10, 43–46] or cause endocrine disruption [47–50]. Pharmaceutically active compounds (PhACs) are highly hydrophilic and have low volatility, so their bioaccumulation might be considered negligible, mainly when compared to other pollutants, such as pesticides and persistent organic compounds (POPs) [27, 51]. Due to their lipophilicity and ability to restrain to organic matter [27–29], these pollutants bioaccumulate in different organisms causing adverse effects in food chain [1, 3, 46, 52–57]. To the best of our knowledge, the fate, occurrence, and toxicity of complex mixtures of pharmaceuticals and their by-products should be further investigated [58, 59]. Furthermore, the growth of dangerous bacteria and algae in water caused by pharmaceutical products can harm aquatic life and render the water unsuitable for human use. Additionally, they can introduce new or higher amounts of different chemicals into the environment, upsetting the aquatic ecosystems' delicate balance [60]. Certain components of PPCPs are recognized or suspected endocrine disruptors, which can impair living organisms' hormone systems' ability to operate

normally. Endocrine-disrupting substances can have a harmful effect on an animal's or an individual's growth, development, and ability to reproduce.

Recent studies have shown that, approximately 200 pharmaceuticals of several classes have been confirmed in Greece, with concentrations that vary from ng/L to µg/L [16, 37, 61–65]. It is imperative to develop a sensitive and selective multi-residue analytical method in order to detect low concentrations of ECs in complex matrices, such as seawater. Liquid-liquid extraction (LLE) is not preferred to solid phase extraction (SPE), because SPE provides high sensitivity and low cost, using small amounts of solvent [66]. SPE is the most commonly used method for the extraction and pre-concentration of organic pollutants in aqueous matrices [67–70]. Thus, the present study elucidates the development and optimization of sample extraction (SPE) and LC-LIT/Orbitrap MS analysis as well as the method validation of a rigorous, rapid, sensitive, selective, low-cost, and environmentally friendly multi-residue analytical method for the determination of 18 parent pharmaceuticals and 3 TPs in seawater (Table S1), selected according to their detection frequency in surface waters and their persistence in the environment. Selected compounds were extracted by off-line SPE followed by liquid chromatography-high resolution Orbitrap mass spectrometry. HRMS provides accurate and reliable information about the identification and quantification of multiclass pharmaceuticals in seawater samples [71–74]. Finally, the proposed method was applied to real seawater samples. Positive detections were found in the seawater samples for some of the selected pharmaceutical compounds, such as oxytetracycline, sulfadiazine, caffeine, paracetamol, and trimethoprim.

Concerning the “One Health” approach the present study gives the opportunity to highlight the accumulation of pharmaceuticals in marine species via seawater and as a consequence its presence in human body via its consumption and the consequences in the food chain. This monitoring is a very challenging and demanding task due to several factors unique to the marine environment, such as the severe dilution that is occurring, the complex hydrodynamic, and local logistical constraints. As a result, important knowledge gaps are prioritized for further investigation. Suitable passive samplers for tracking seawater levels in pharmaceuticals require more development and standardization. Approaches to non-target analysis hold promise for improving the list of compounds to be analyzed and for comprehending the destiny of the targeted molecules. It would be possible to more accurately determine the ecological risk that these compounds pose to marine ecosystems by implementing integrated monitoring through long-term ecotoxicological testing on vulnerable marine species at environmental levels [75].

Materials and methods

Standards and reagents

A collection of 25 multiclass pharmaceuticals was chosen for the current investigation; Table S1 provides information on the target compounds, including formula, specific physicochemical parameters, and corresponding isotopically labelled internal standards (ILISs). All the selected pharmaceuticals were high-purity pharmaceutical standards (purity > 98%). Citalopram, venlafaxine, and fluoxetine hydrochloride were obtained from TCI (Zwijndrecht, Belgium). *O*-Desmethyl venlafaxine, norfluoxetine hydrochloride, erythromycin, carbamazepine, *N*-acetyl sulfamethoxazole, sulfadiazine, sulfamethazine, sulfamethizole, sulfamethoxazole, sulfamethoxypyridazine, sertraline hydrochloride, sulfapyridine, sulfaquinoxaline, sulfathiazole, caffeine, paracetamol, trimethoprim, carbamazepine, carbamazepine-10,11-epoxide, phenazone, oxytetracycline and oxolinic acid were purchased from Sigma-Aldrich (Darmstadt, Germany) and *N*-desmethyl sertraline hydrochloride was purchased from Santa Cruz Biotechnology (Santa Cruz, USA). Labelled internal standards carbamazepine- d_{10} and fluoxetine- d_5 were obtained from A2S (Saint Jean d'Ilac, France). The stock standard solutions were prepared in methanol, at concentrations of approximately 2,000 mg L⁻¹ and 1,000 mg L⁻¹ and were stored at -20°C. By suitably diluting the stock standard solutions in methanol/water 10/90 (v/v), fresh individual and blended composite working solutions were prepared at various concentrations. A distinct mixture of ILISs was prepared in methanol at a concentration of 20 mg L⁻¹, and thereafter diluted accordingly. Fisher Scientific (Leicester, UK) provided the methanol (MeOH) and water used as LC-MS grade solvents, while formic acid (FA) was purchased from

Carlo Erba Reagents (Chaussée du Vexin, French) and hydrochloric acid (HCl) fuming 37% for analysis from Merck (Darmstadt, Germany).

Sample collection and preservation

Without any pharmaceutical contamination, seawater from an aquafarm in the Ionian Sea close to Ioannina was used for method development. Samples were collected and then transferred to the lab in a transportable freezer. The samples were vacuum-filtered with Millipore (0.45 µm) before analysis to eliminate any suspended solid material, and they were then stored at -20°C until extraction.

Sample extraction (SPE)

Through the use of a standard offline SPE connected to a vacuum pump, selected analytes were isolated and pre-concentrated from water samples. In order to optimize the extraction method, five different types of cartridges were tested, Oasis HLB (200 mg, 6 mL), Oasis MCX (150 mg, 6 mL), C8-CNWBond (500 mg, 6 mL), C18-CNWBond Elut (500 mg, 6 mL) and Telos Neo PRP (polar-modified reversed phase) (200 mg, 6 mL). Another parameter tested was the pH value, pH 3 and pH 7. Water LC-MS and methanol LC-MS + 2% acetic acid 20:80 (v/v) were examined for the washing step, whereas methanol and methanol + 2% acetic acid were tested as elution solvents. Finally, the highest recoveries were obtained using Oasis HLB cartridges (200 mg, 6 mL), loading 250 mL of sample, washing with water LC-MS and elution with methanol at pH 3 adjusted with HCl 37% 1 M.

Oasis HLB cartridges were preconditioned with 5 mL of methanol and 5 mL of water LC-MS in the optimized method before extraction. Water samples (250 mL) with 5 mL of 5% Na₂EDTA and a pH 3 value adjusted with HCl 1 M were passed through the SPE cartridges at a flow rate of roughly 6 mL/min using a vacuum manifold that maintained a constant pressure before the cartridge dried out. Following the percolation of the entire sample, 5 mL of water LC-MS was used to wash the cartridges. Following a 20-min vacuum drying period to eliminate any remaining water, the analytes were eluted using 2 × 5 mL of methanol, by gravity, at 1 mL/min flow rate. At 40°C, methanol extracts were dried off with a light stream of nitrogen, reconstituted in a mixture of 500 µL water/methanol 90:10 (v/v) and stored at -20°C until chromatographic analysis (Figure S1).

LC-LIT/Orbitrap MS analysis

Accela UHPLC system (Thermo Fisher Scientific, Bremen, Germany) including Accela quaternary gradient UHPLC pump (model 1.05.0900) and Accela autosampler (model 2.1.1) was used for the LC separation. First, we tested different proportions of the reconstitution solvent, 50-50, 70-30, 80-20, and 90-10 H₂O:MeOH (LC-MS). The optimal solvent was determined to be H₂O:MeOH (90:10 v/v).

Water (A) and methanol (B), both containing 0.1% FA, made up the mobile phase. A reversed-phase Hypersil Gold C18 analytical column (Thermo Fisher Scientific, Göteborg, Sweden) measuring 100 mm in length, 2.1 mm in diameter, and 1.9 µm in particle size was used for the separation. The column was kept at 35°C for the duration of the analysis. The mobile phase gradient started with 95% mobile phase A and was maintained for 1 min. In the following minute, the amount of mobile phase A was reduced to 30%, reaching 0% in 5 min, and then stabilizing for an additional 2 min. Afterwards, the mobile phase was restored to 95% A and maintained for more than 3 min for re-equilibration. 5 µL was the injection volume that was set, the autosampler tray temperature was stabilized at 20°C and the mobile phase flow rate was stable at 250 µL throughout the analysis.

Thermo Fisher Scientific (Bremen, Germany), provided the hybrid LIT Orbitrap XL Fourier transform mass spectrometer, and an Ion Max Electrospray Ionization (ESI) probe was installed in the hybrid MS system's linear ion trap. The following ESI settings were used in the positive ionization mode: tube lens, 90 V; sheath and auxiliary gas flow rates, 10 arbitrary units (au); spray voltage, 4 kV; capillary temperature, 320°C; mass range, 120–1,000 m/z; and automatic gain control (AGC) target, 4 × 10⁵. The resolution was 60,000 in full-scan (FS) MS mode, while in the data-dependent MS² mode (ddMS²), it was 15,000 and the

normalized collision energy (NCE) was 30%. Xcalibur 2.2 software (Thermo Electron, San Jose) was used for instrument control and qualitative and quantitative evaluations.

Method validation

In compliance with the Document No. SANTE/12682/2019, method validation was performed on the optimized method in accordance with the actual guidelines [76]. The method's accuracy, linearity, precision, limits of detection (LOD) and qualification, matrix effect (ME), and process efficiency (PE) were all assessed.

By fortifying the seawater samples at the start of the extraction and comparing the concentrations obtained after the extraction with the initial spiking level, accuracy—expressed as method recoveries—was assessed at three different concentration levels of 25 ng L⁻¹, 100 ng L⁻¹, and 250 ng L⁻¹ ($n = 5$). Recoveries were computed using the provided equation (Equation 1):

$$\text{Recovery (\%)} = \left(\frac{C_{\text{spiked}} - C_{\text{blank}}}{C_{\text{reference}}} \right) \times 100 \quad (1)$$

where C_{spiked} is the concentration for spiked seawater samples; $C_{\text{reference}}$ is the concentration obtained for seawater extracts spiked after the whole process; and C_{blank} is the concentration of a seawater extract without any spike to confirm the absence of analytes.

Using linear least squares fit for the areas under the peak versus concentrations, a nine-point method calibration curve was constructed for each compound, allowing for the determination of the linearity of the optimized technique in a range from the limits of quantification (LOQ) to almost 100 times the LOQ. The relative standard deviation (%RSD_r) of each of the five repetitions on the same day was used to calculate intra-day precision, also known as repeatability. Five days in a row, the same analysis ($n = 5$) was performed to determine the inter-day precision (reproducibility), which was reported as %RSD_R. In a quantitative approach, the mean recoveries range from 70% to 120% with an RSD ≤ 20%, according to SANTE guidelines. If the mean recovery is not less than 30% or more than 140%, with an RSD ≤ 20%, mean recovery values outside of the range of 70–120% may be acceptable in exceptional circumstances.

Using the signal-to-noise ratio (S/N) of 3:1 and 10:1, respectively, the LOD and LOQ were calculated from the extracted ion chromatograms (XICs) at the lowest concentration obtained from the recovery test. To check for variations in the analytical signal, a non-spiked blank sample was injected each time quantification was performed. The values obtained from this sample were then deducted from the values obtained from the spiked samples. A five-point matrix-matched calibration curve in methanol/water extract 10/90 (v/v) was then created using blank seawater sample extracts and injected at the start of each sequence. Every five samples, a solvent was supplied to prevent partial blockage of the ion transfer capillary and a drop in signal intensities.

In order to assess ME, two calibration curves were created: one using seawater extract and the other using a solvent mixture. Both calibration curves were prepared within the same concentration range (2.5–1,000 ng L⁻¹), and a blank extract was used to represent the signal of the non-spiked matrix extract. Calculations were based on the following equation (Equation 2):

$$ME (\%) = \left(\left(\frac{\text{Slope of calibration curve in matrix}}{\text{Slope of calibration curve in solvent}} \right) - 1 \right) \times 100 \quad (2)$$

According to Scordo et al. [77] (2020), a positive matrix indicating signal enhancement is present when $ME > 0$, while a negative ME and signal suppression are indicated by values of $ME < 0$. However, ME% values in the range of ± 20% to ± 50% are regarded as low, medium, and strong, respectively. To reduce the impact of the matrix on the analytes, suitable techniques must be used for values more than ± 20% [78–81]. The following equation (Equation 3) was used to calculate the %PE in order to correlate the ME with the recovered recoveries.

$$PE (\%) = \frac{(\text{Recovery} \times ME)}{100} \quad (3)$$

As the PE values are close to 100% indicate that the optimized method is accurate and effective, while recoveries are also close to 100% and ME values are low [81, 82].

Results

Solid phase extraction optimization

First, for the optimization of SPE, five different types of cartridges, Oasis HLB (200 mg, 6 mL), Oasis MCX (150 mg, 6 mL), C8-CN WBond (500 mg, 6 mL), C18-CNWBond Elut (500 mg, 6 mL), Telos Neo PRP (200 mg, 6 mL) and two different pH values, pH 3 (adjusted with HCl 1 M) and pH 7 (no pH adjustment needed), were tested. Prior to the extraction a conditioning step took place, 5 mL of methanol (LC-MS) followed by 5 mL of water (LC-MS) were added to the cartridges. Then, 250 mL of the sample was loaded into the cartridges at a flow rate of 6 mL/min and washed with 5 mL of water (LC-MS). Afterwards, the cartridges were dried under vacuum for approximately 20 min, and the elution step was carried out using 2 × 5 mL methanol (LC-MS) [19, 52]. The final extracts were evaporated under a gentle stream of nitrogen (N₂) until dryness and reconstituted in 500 µL 90/10 water/methanol (LC-MS). In all cases, 5 mL of Na₂EDTA 5% solution was added to the samples. Prior to extraction, Na₂EDTA is added in order to complex with metal ions and prevent metal interferences [19, 67, 83–85]. Preliminary experiments took place at pH 7 for all cartridges and the two cartridges that gave better recoveries were further investigated at pH 3. Results showed that Oasis HLB (200 mg, 6 mL) gave recoveries from 10% to 180%, Oasis MCX (150 mg, 6 mL) 23.4–99.2% for 13 pharmaceuticals, C8-CNWBond (500 mg, 6 mL) gave recoveries for only 9 pharmaceuticals and values ranged between 4.0–59.4%, C18-CNWBond Elut (500 mg, 6 mL) recoveries were found at values 4.3–147.0% for 15 pharmaceuticals and Telos neo PRP (200 mg, 6 mL) 10.8–138.2% at pH 7 (Figure 1). In accordance with the results analyzed above, we further examined Oasis HLB and Telos neo PRP at pH 3. Finally, better recoveries were obtained for Oasis HLB cartridges at pH 3, 65.0–110.2%, while recoveries for Telos neo PRP ranged between 11.0% and 122.7% (Figure 2).

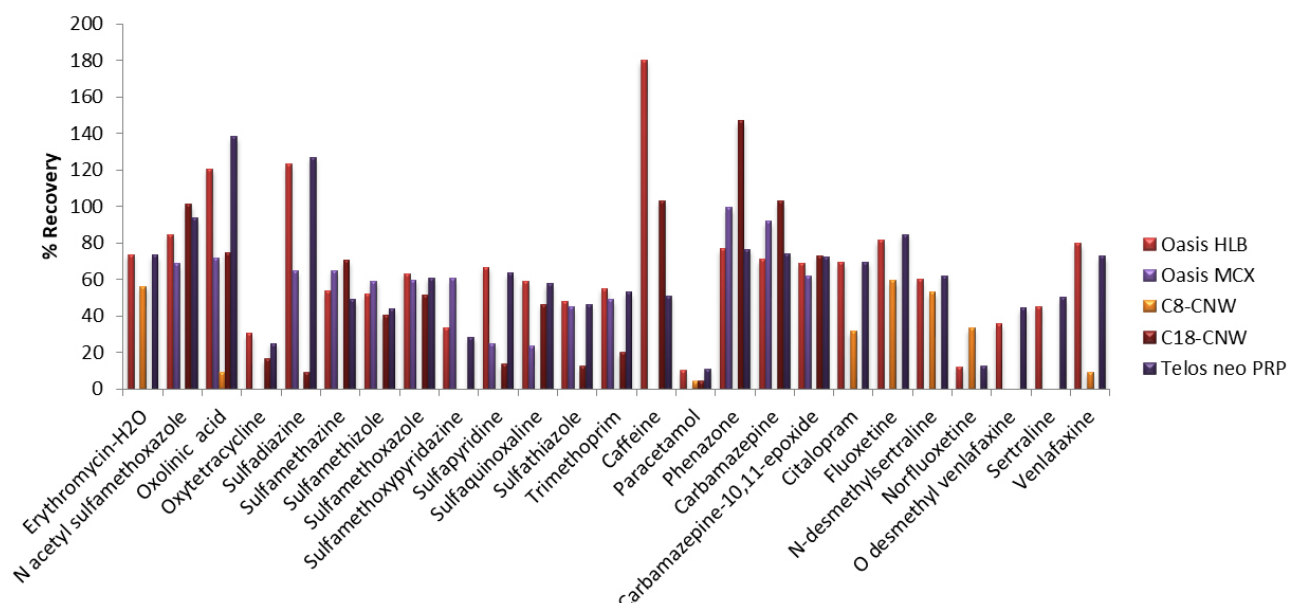


Figure 1. Recoveries obtained with five different cartridges (Oasis HLB, Oasis MCX, C8-CNWBond, C18-CNWBond Elut, Telos neo PRP) at pH 7. PRP: polar-modified reversed phase

Orbitrap optimization

In the current study, all selected pharmaceuticals were detected and quantified with FS mode in positive ionization mode as [M + H]⁺ adduct ions, along with precise mass spectra obtained at 60,000 FWHM as

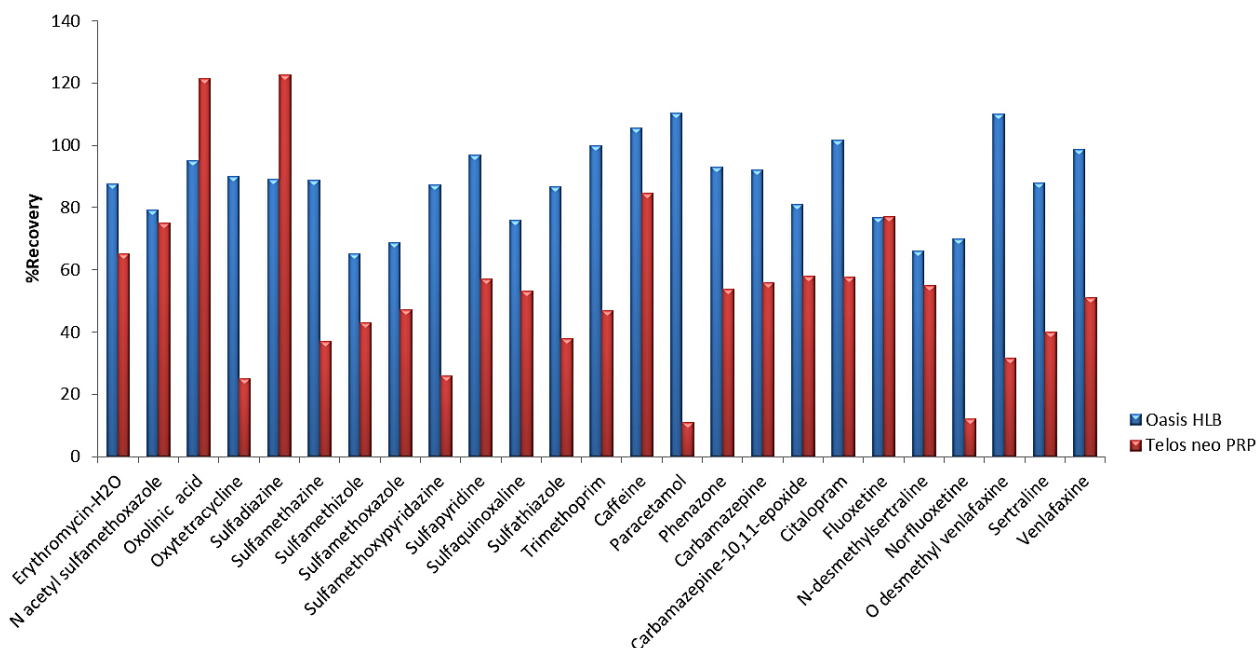


Figure 2. Recoveries obtained with cartridges Oasis HLB and Telos neo PRP cartridges at pH 3. PRP: polar-modified reversed phase

profile data. The calculated accurate mass, which should match the theoretical accurate mass within a mass tolerance of ± 10 ppm, and the retention time, which needs to match the analyte in the sample within a tolerance of ± 30 sec in the same analytical batch, were used to identify them. MS fragmentation (at least one fragment ion) was used for a more precise identification. First, a mix of standard solutions ($50 \mu\text{g L}^{-1}$) of the pharmaceuticals analyzed was injected directly into the mass analyzer in FS mode to find the precursor ion, the most abundant fragments and the necessary collision energy (Table 1). A preliminary test to determine the most suitable column was carried out by testing Thermo Scientific, diphenyl ($50 \text{ mm} \times 2.1 \text{ mm}$; $2.6 \mu\text{m}$) and hypersil gold C18 ($100 \text{ mm} \times 2.1 \text{ mm}$; $1.9 \mu\text{m}$) from Thermo Scientific. Peak shape and sensitivity were good in both cases, but a slightly better separation of the standards was achieved on the hypersil gold C18 column due to more specific interactions possible between the stationary phase and the analytes. In the present study, two different mobile phases were tested to optimize the separation and detection conditions. It is known that the addition of FA or ammonium formate to the mobile phase is a common practice in positive mode to improve ionization: (1) water and methanol both acidified with 0.1% FA and (2) water and methanol with 0.1% FA and 5 mM ammonium formate. The first combination was selected because of its applicability and effectiveness in multi-residue methods covering a broad spectrum of ECs giving better signal for most of the analytes. Another parameter in the MS is the flow rate. $400 \mu\text{L min}^{-1}$ and $250 \mu\text{L min}^{-1}$ were tested and the optimal value was found to be $250 \mu\text{L min}^{-1}$. Column temperature was also evaluated at 27°C and 35°C , with the latter being the best option. In addition, different solvent compositions (water/methanol 50:50 v/v, methanol/water 10:90 v/v, methanol/water, 10:90 v/v, methanol/water acidified with 0.1% FA, water/methanol 70:30 v/v, and methanol/water 20:80 v/v) were tested as reconstitution solvents for the final extract. Better and sharper peaks were obtained with 10:90 (v/v) methanol/water acidified with 0.1% FA. The high resolution allowed for the separation of peaks that were not fully separated in the chromatographic dimension. Regarding MS conditions, AGC target, tube lens, sheath gas, auxiliary gas and spray voltage were studied as a function of the obtained analytical signal. For AGC target, among the two tested values (4×10^5 and 10^6), 4×10^5 was selected as the best. Tube lens values of 90 V and 110 V were tested, and 90 V significantly improved the signal. Sheath gas tested values were 38 and 10, with the second one found to be the best, while the auxiliary gas flow studied values of 15, 10 and 10 were selected. Spray voltage values of 3.6 kV and 4 kV were tested and the last one was found to be the most appropriate. As shown in Table 1, at a resolution of 60,000, the mass error was always less than 0.5 ppm. The fact that accurate mass measurements are not influenced by the complex matrix components proves that LTQ Orbitrap MS contributes to the separation of compounds among potential interferences.

Table 1. Ultrahigh-performance liquid chromatography-LTQ Orbitrap MS parameters

Pharmaceuticals	IS*	Elemental composition [M + H] ⁺	t _R (min)	Theoretical mass [M + H]	Experimental mass	Mass accuracy (Δppm)	DBE	Fragment ions (NCE 30eV)**
Antibiotics								
Erythromycin-H ₂ O	CBZ d-10	C ₃₇ H ₆₆ NO ₁₂ ⁺	4.41	716,4580	716,4598	1.767	5.5	558.3627/540.3530/522.3413
<i>N</i> -Acetyl sulfamethoxazole (M)	CBZ d-10	C ₁₂ H ₁₄ N ₃ O ₄ S ⁺	3.96	296,0700	296,0700	0.091	7.5	188.0822/136.0758/236.0492/198.0222/194.0385/190.0977/202.0975
Oxolinic acid	CBZ d-10	C ₁₃ H ₁₂ NO ₅ ⁺	4.11	262,0710	262,0712	1.225	8.5	244.0607/262.0711
Oxytetracycline***	CBZ d-10	C ₂₂ H ₂₅ N ₂ O ₉ ⁺	3.74	461,1555	461,1558	0.788	11.5	443.1447/426.1180
Sulfadiazine	CBZ d-10	C ₁₉ H ₁₁ N ₄ O ₂ S ⁺	3.46	251,0597	251,0599	−1.525	7.5	156.0114/158.0017/108.0441
Sulfamethazine	CBZ d-10	C ₁₂ H ₁₅ N ₄ O ₂ S ⁺	3.74	279,0901	279,0914	1.351	7.5	186.0335/204.0440/156.0116/124.0869
Sulfamethizole	CBZ d-10	C ₉ H ₁₁ N ₄ O ₂ S ₂ ⁺	3.71	271,0318	271,0322	1.500	6.5	156.0117/108.0443
Sulfamethoxazole	CBZ d-10	C ₁₀ H ₁₂ N ₃ O ₃ S ⁺	3.84	254,0594	254,0597	0.793	6.5	156.0115/188.0822/147.0792/190.0977/160.0870/194.0387/108.0442
Sulfamethoxypyridazine	CBZ d-10	C ₁₁ H ₁₃ N ₄ O ₃ S ⁺	3.76	281,0703	281,0706	1.290	7.5	156.0115/188.0127/126.0662/108.0442
Sulfapyridine	CBZ d-10	C ₁₁ H ₁₂ N ₃ O ₂ S ⁺	3.59	250,0645	250,0645	−0.095	7.5	156.0115/184.0872/108.0442
Sulfaquinoxaline	CBZ d-10	C ₁₄ H ₁₃ N ₄ O ₂ S ⁺	4.09	301,0754	301,0753	−0.076	10.5	156.0115/108.0440
Sulfathiazole	CBZ d-10	C ₉ H ₁₀ N ₃ O ₂ S ₂ ⁺	3.52	256,0209	256,0208	−0.213	6.5	156.0115/108.0442
Trimethoprim	CBZ d-10	C ₁₄ H ₁₉ N ₄ O ₃ ⁺	3.64	291,1462	291,1450	−1.329	7.5	230.1163/261.0983/123.0663
Stimulant								
Caffeine	CBZ d-10	C ₈ H ₁₁ N ₄ O ₂ ⁺	3.76	195,0877	195,0879	1.783	5.5	138.0662/133.0858/89.0592
Analgesics								
Paracetamol	CBZ d-10	C ₈ H ₁₀ NO ₂ ⁺	3.44	152,0706	152,0705	−0.691	4.5	110.0598/134.0601
Phenazone	CBZ d-10	C ₁₁ H ₁₃ N ₂ O ⁺	3.91	189,1022	189,1024	0.637	6.5	161.1073/131.0728/144.0807/146.0838/172.0757/174.0787/130.0649
Anticonvulsants								
Carbamazepine	CBZ d-10	C ₁₅ H ₁₃ N ₂ O ⁺	4.51	237,1022	237,1024	0.550	10.5	194.0965/220.0753
Carbamazepine-10.11-epoxide (M)	CBZ d-10	C ₁₅ H ₁₃ N ₂ O ₂ ⁺	4.20	253,0972	253,0969	−0.135	10.5	236.0704/210.0912
Antidepressants								
Citalopram	CBZ d-10	C ₂₀ H ₂₂ FN ₂ O ⁺	4.09	325,1711	325,1710	−0.240	10.5	262.1027/280.1131/307.1606/109.0445
Fluoxetine	FXT d-5	C ₁₇ H ₁₉ F ₃ NO ⁺	4.54	310,1413	310,1417	1.272	7.5	148,1123
<i>N</i> -Desmethyl sertraline (M)	CBZ d-10	C ₁₆ H ₁₆ Cl ₂ N ⁺	4.75	292,0654	292,0652	−0.519	8.5	275,0000
Norfluoxetine (M)	FXT d-5	C ₁₆ H ₁₇ F ₃ NO ⁺	4.54	296,1257	296,1262	1.637	7.5	134,0000
O-Desmethyl venlafaxine	CBZ d-10	C ₁₆ H ₂₆ NO ₂ ⁺	3.81	264,1958	264,1961	0.433	4.5	246.1857/107.0490
Sertraline	CBZ d-10	C ₁₇ H ₁₈ Cl ₂ N ⁺	4.68	306,0810	306,0809	−0.397	8.5	275.0388/129.0689
Venlafaxine	CBZ d-10	C ₁₇ H ₂₈ NO ₂ ⁺	4.06	278,2115	278,2114	−0.344	4.5	260.2011/121.0646

IS*: internal standards (CBZ d-10: carbamazepine d-10/FXT d-5: fluoxetine d-5); NCE**: normalized collision energy; oxytetracycline*** NCE: 20 eV

Method validation

The final optimized parameters were as follows: Oasis HLB (200 mg, 6 mL) cartridges, conditioning of sorbent with methanol and water, both LC-MS analysis, wash with water and as elution solvent was used methanol. Then, 250 mL of seawater was filtered, followed by pH adjustment with HCl 37% 1 M at pH 3 and 5 mL of Na₂EDTA 5% was added to the sample. Elution extracts were evaporated under a gentle stream of nitrogen until dry and reconstituted with 90:10 water/methanol. The analytical method was validated for its identification and quantification capabilities. All validation performance characteristics are shown in Table 2.

Table 2. Method validation parameters: linearity, linear range, limits of detection (LODs), limits of quantification (LOQs), mean recoveries (%) and relative standard deviations (RSDs%, $n = 5$) of three different spiked levels ($n = 5$) studied for intra-day and inter-day, matrix effect (ME%) and process efficiency (PE%) for pharmaceutical residues in seawater

Pharmaceuticals	Linearity (r^2)	Linear range (ng L ⁻¹)	LOD (ng L ⁻¹)	LOQ (ng L ⁻¹)	25 ng L ⁻¹		100 ng L ⁻¹		250 ng L ⁻¹		25 ng L ⁻¹		100 ng L ⁻¹		250 ng L ⁻¹		ME%	PE%
					Rec (%)	RSD _r %	Rec (%)	RSD _r %	Rec (%)	RSD _r %	Rec (%)	RSD _R %	Rec (%)	RSD _R %	Rec (%)	RSD _R %		
Antibiotics																		
Erythromycin-H ₂ O	0.9977	25–250	6.0	18.5	76.2	1.1	87.6	1.3	87.0	0.9	76.0	1.7	87.4	1.1	86.8	1.1	14.9	100.7
<i>N</i> -Acetyl sulfamethoxazole	0.9989	25–250	1.8	5.3	76.4	0.8	79.2	1.7	75.6	1.3	74.0	1.4	76.8	2.1	78.2	1.9	0.6	79.6
Oxolinic acid	0.9976	25–250	9.8	26.4			85.2	0.9	85.0	1.2			88.6	1.3	78.6	1.5	2.0	86.9
Oxytetracycline	0.9996	12.5–125	5.0	16.7	81.4	1.2	90.0	0.8	86.2	1.3	77.4	1.6	86.0	1.3	82.2	1.5	9.2	98.3
Sulfadiazine	0.9995	25–250	2.5	8.5	86.6	1.1	89.0	1.2	76.6	1.1	82.4	1.2	94.8	2.4	82.4	1.2	−18.8	72.2
Sulfamethazine	0.9996	25–250	2.1	6.0	81.4	1.1	88.8	1.3	86.0	1.4	78.2	2.3	85.4	2.5	82.6	1.4	5.7	93.9
Sulfamethizole	0.9994	25–250	2.5	6.6	61.6	1.3	65.0	1.7	62.4	1.3	62.0	1.8	65.4	2.0	62.8	2.2	5.6	68.6
Sulfamethoxazole	1.0000	25–250	1.1	3.0	92.0	1.7	98.6	1.9	92.6	1.8	98.2	1.9	95.0	2.9	90.8	1.8	−1.8	96.8
Sulfamethoxypyridazine	0.9997	25–250	3.4	10.3	79.4	1.2	87.2	0.8	84.2	1.2	77.4	1.4	85.0	2.9	82.0	2.1	3.1	89.9
Sulfapyridine	0.9995	25–250	3.0	10.0	90.2	1.1	96.8	1.5	96.2	0.9	74.8	1.4	76.6	1.5	76.0	0.9	0.9	97.7
Sulfaquinoxaline	0.9907	25–250	3.3	10.0	71.2	1.0	75.8	1.7	76.2	1.1	70.4	1.3	70.0	2.4	70.4	2.4	6.0	80.3
Sulfathiazole	0.9970	25–250	3.0	9.3	86.8	1.1	86.6	1.5	87.0	1.5	88.4	1.2	88.2	1.9	88.6	1.7	−3.1	84.5
Trimethoprim	0.9975	50–250	5.0	18.0	98.8	0.6	101.2	1.6	98.2	2.2	92.0	1.3	93.0	3.1	95.0	4.2	−0.9	100.2
Stimulant																		
Caffeine	0.9998	50–250	3.3	10.6	85.2	1.0	105.6	0.5	110.8	0.7	95.0	1.1	115.4	1.3	118.8	1.0	−0.2	105.4
Analgesics																		
Paracetamol	0.9962	25–250	3.6	9.8	93.4	1.3	110.2	1.0	116.2	0.5	81.8	1.4	98.6	1.5	104.6	1.1	−15.8	92.8
Phenazone	0.9998	25–250	2.5	8.3	81.6	1.1	93.0	0.9	80.8	1.0	85.4	2.1	96.8	1.7	84.4	1.0	−14.4	79.6
Anticonvulsants																		
Carbamazepine	1.0000	25–250	0.5	1.2	92.6	1.5	92.0	1.3	87.8	0.8	91.8	1.6	91.2	1.3	87.0	1.5	−0.9	91.2
Carbamazepine-10.11-epoxide (M)	0.9949	12.5–125	1.5	4.5	80.0	1.6	83.2	3.9	84.0	1.2	77.4	1.3	80.4	2.2	83.2	4.8	−8.3	76.3
Antidepressants																		
Citalopram	0.9998	25–250	0.7	2.1	62.6	1.8	81.6	1.0	96.0	1.0	62.0	1.6	88.6	1.5	82.8	1.6	18.1	96.4
Fluoxetine	0.9944	12.5–250	1.4	4.1	84.6	0.6	86.8	1.1	82.0	1.2	85.6	1.1	87.8	2.2	83.0	1.5	14.8	99.6
<i>N</i> -Desmethyl sertraline (M)	0.9942	50–500	3.1	8.5	62.0	1.8	65.4	2.6	68.8	0.9	61.8	3.2	64.0	2.6	64.4	1.8	−0.9	67.8
Norfluoxetine (M)	0.9925	100–500	2.2	6.0	64.6	1.7	69.8	1.2	71.6	1.6	66.6	1.7	64.8	2.0	66.4	1.7	−14.1	60.0
<i>O</i> -Desmethyl venlafaxine	0.9960	25–250	0.8	2.0	77.0	1.4	110.0	1.3	101.0	1.0	74.4	1.9	103.0	1.3	93.8	1.4	8.7	119.6
Sertraline	0.9987	2.5–500	1.3	4.2	85.6	1.4	86.4	1.8	87.8	1.7	82.1	1.1	85.0	2.3	87.8	1.7	0.7	82.7
Venlafaxine	0.9981	25–250	0.3	1.5	68.0	1.2	98.8	1.3	91.0	1.1	69.2	1.2	100.0	1.1	92.4	1.5	4.9	103.7

RSD_r repeatability relative standard deviation; RSD_R reproducibility relative standard deviation

Three spiking levels (25, 100, and 250 ng L⁻¹) were selected to conduct the recovery experiments. A nine-point matrix-matched calibration curve was used to calculate concentrations in the spiked samples compared with the initial spiking level. Recoveries in all cases, at the intermediate spiking level ranged from 64.8% for norfluoxetine to 115.4% for caffeine, while recoveries for the higher level were found to be between 62.4% for sulfamethizole to 118.8% for caffeine and for the lower level 61.6% for sulfamethizole and 98.2% for sulfamethoxazole. Method precision was calculated as the standard deviation ranging from 0.5% for

caffeine and paracetamol to 1.9% for carbamazepine-10,11-epoxide and from 0.9% for sulfapyridine to 4.8% for carbamazepine-10,11-epoxide for intra-day and inter-day, respectively.

Linearity was checked using spiked seawater samples in order to construct a nine-point calibration curve, in a range from LOQ to 1000 ng L⁻¹. The developed method exhibited excellent linearity ($r^2 > 0.991$) for all compounds. The linear range and correlation coefficients for each compound are listed in [Table 2](#).

Method precision was assessed in terms of repeatability (intra-day) and reproducibility (inter-day) at three spiking levels of 25, 100, and 250 ng L⁻¹ ([Table 2](#)). This was measured as the standard deviation of the recovery percentages of the spiked samples obtained on the same day ($n = 5$) and five different days. Low relative standard deviations are crucial because of sensitivity variations in the equipment, even within the same sequence, which may result in variable results.

LOD and quantification were found in nanograms per gram as described previously. LODs ranged from 0.3 ng L⁻¹ for venlafaxine to 9.8 ng L⁻¹ for oxolinic acid, while LOQs from 1.2 ng L⁻¹ for carbamazepine to 26.4 ng L⁻¹ for oxolinic acid. It is noteworthy that in high-resolution MS detectors, the chromatogram may not provide information about the background noise, making the calculation of the S/N difficult. When background noise is not present in the chromatogram, the limits are estimated by injecting decreasing concentrations corresponding to a peak signal value around 10⁴, as recommended elsewhere [[33](#), [86](#)].

Matrix effects

The ME was studied as a validation parameter to assess the potential interferences of the matrix components in the ionization. The residual matrix components contained in complex solid matrices typically interfere in the ionization, affect the analytical signal measurements and hence cause errors, leading to inaccurate results. The use of matrix-matched calibration is highly recommended and isotope standards constitute an additional way to minimize ME. Matrix compounds can be eluted at the same retention time as the target ones. A matrix-matched calibration curve from pristine samples was prepared and the slope was compared with the slope of a curve in a solvent mixture. As a result, the ME was calculated using [Equation 2](#). As shown in [Table 2](#) and [Figure 3A](#) ME values found to be low, between -18.8% for sulfadiazine to 18.1% for citalopram, indicating a slight ME (lower than $\pm 20\%$) [[81](#)]. The overall method efficiency was expressed as the PE, correlating the MEs with the recoveries obtained. PE values were calculated using [Equation 3](#). Results revealed that the PE was over 60% for the majority of the compounds analyzed. The highest values were calculated for norfluoxetine, while the lowest were found for caffeine and *O*-desmethyl venlafaxine ([Table 2](#) and [Figure 3B](#)).

Application to real samples

After the development, optimization, and validation of the SPE method for the determination of pharmaceutical compounds, their application to real seawater samples from points within a fish farm located in the Epirus region (Ionian Sea) followed. First, the physicochemical characteristics of the water samples were measured as soon as they were received in the laboratory. The physicochemical characteristics of the samples are listed in [Table 3](#). According to the results listed in [Table 4](#), positive detections were found in the seawater samples for some of the selected pharmaceutical compounds, such as oxytetracycline, sulfadiazine, caffeine, paracetamol, and trimethoprim. In more detail, the table also shows the concentrations for each month of the annual sampling.

The pharmaceuticals detected in seawater samples were mainly antibiotics and they presented the highest concentrations during winter months. Specifically, oxytetracycline given the highest concentration (43,817 ng L⁻¹) in seawater samples in February 2021, sulfadiazine was detected in September 2020 (145.5 ng L⁻¹), February 2021 (1,092 ng L⁻¹), April and May 2021 (411.3 ng L⁻¹ and 339.3 ng L⁻¹, respectively), while trimethoprim was found in a low concentration of approximately 32.6 ng L⁻¹ and 34.2 ng L⁻¹ during February and May 2021, respectively. Caffeine and paracetamol were detected at levels below the LOQ values.

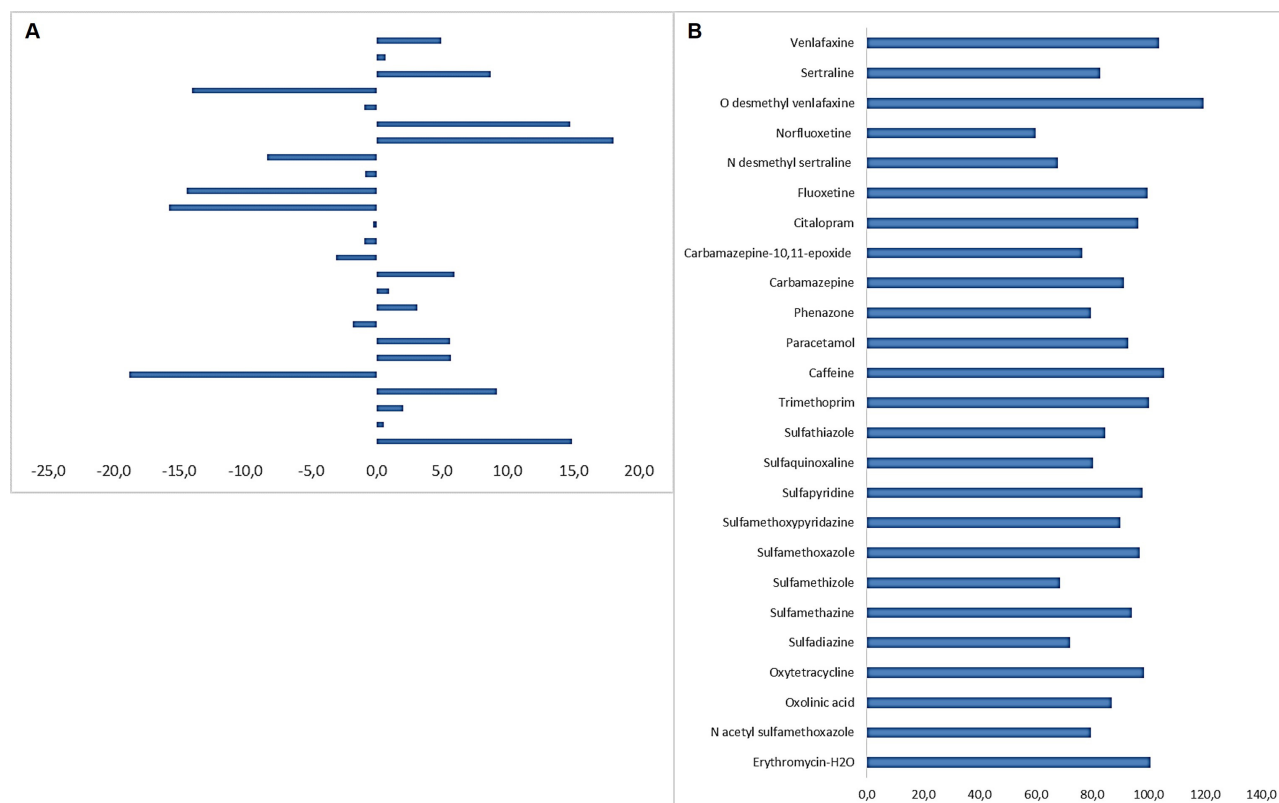


Figure 3. A. Matrix effects calculated from the slopes of the solvent and matrix-matched calibration curves for the pharmaceuticals studied; B. calculated process efficiency (PE%) for the selected compounds

However, the distribution of antimicrobial resistance related to antibiotics, needs to be a major priority, in order to preserve the aquaculture environment and guarantee seafood safety.

Discussion

The occurrence and fate of emerging pollutants in aquatic ecosystems play an intrinsic role in the field of environmental pollution studies. Frequently prescribed pharmaceuticals, belonging to several classes and highly consumed PPCPs are discharged into the marine environment and they are not completely removed from wastewater treatment plants (WWTPs). As a result, parent compounds and their TPs tend to bioaccumulate in aquatic biota. Therefore, there is an urgent need to develop and validate a multi-residue analytical method for the determination of ECs in seawater. Concentration levels ranged from ng/L to µg/L. Therefore, the present study illustrates an off-line SPE method, which has been optimized, validated, and applied in seawater samples from an aquafarm, near the city of Ioannina in order to determine 21 selected pharmaceuticals and their TPs. The SPE method, was developed using high-performance liquid chromatography/Orbitrap (LTQ Orbitrap) mass spectrometry. This study demonstrated the applicability of SPE extraction for organic contaminants as well as the excellent high resolution and accuracy obtained with Orbitrap HRMS. The overall analytical performance was tested in terms of accuracy (trueness and precision), linearity, LOD and quantification, ME and PE. Positive detections were found in the seawater samples for some of the selected pharmaceutical compounds, such as the following: oxytetracycline, sulfadiazine, caffeine, paracetamol, trimethoprim. In the present study, the highest concentration was found in the February sample for the antibiotic oxytetracycline (43,817 ng L⁻¹). Table 5 presents the main characteristics of recent work on surface waters applying the SPE analytical method and analysis of the samples by mass chromatography. In most cases, liquid chromatography coupled with mass chromatography has been applied, while Cao et al. [11], used a triple quadrupole. By comparing these data with the optimized method applied in this work, we noticed that in the majority of cases the aqueous samples were acidified to a pH value of 3. Regarding the recoveries, Asghar et al. [71], found similar recovery values (62.98–105.74%) to the present work, while Chaves et al. [18], Xu et al. [43], Rivera-Jaimes et al. [14], found slightly lower recoveries. All studies found linearity > 0.99, except for Asghar et al. [71],

Table 3. Physicochemical characteristics of distilled water and real fish culture samples

Parameters	Distilled water	July 2020	August 2020	September 2020	October 2020	November 2020	December 2020	January 2021	February 2021	March 2021	April 2021	May 2021	June 2021
Conductivity (mS/cm)	48.1	50.5	47.8	47.3	45.6	46.1	50.5	46.9	51.3	52.2	50.9	46.6	61.7
TDS (mg L ⁻¹)	80,500	89,500	85,542	84,250	77,000	85,000	91,000	86,500	84,500	91,500	84,000	80,500	90,500
Temperature (°C)	16.4	16.0	15.8	15.6	17.5	14.9	15.9	15.3	19.5	19.6	19.1	26.5	28.0
Salinity (‰)	38.5	41.1	38.9	38.7	35.3	38.2	41.2	38.9	35.9	39.0	38.4	38.8	38.8
pH	6.8	5.5	5.5	5.5	5.5	5.5	5.5	5.5	5.5	6.0	6.0	6.0	6.0

TDS: total dissolved solids

Table 4. Pharmaceutical substances (ng L⁻¹) detected in real fish farm seawater samples during annual sampling

Compounds	July 2020	August 2020	September 2020	October 2020	November 2020	December 2020	January 2021	February 2021	March 2021	April 2021	May 2021	June 2021
Erythromycin-H ₂ O	< LOD	< LOD	< LOD	< LOD	< LOD	< LOD	< LOD	< LOD	< LOD	< LOD	< LOD	< LOD
Oxolinc acid	< LOD	< LOD	< LOD	< LOD	< LOD	< LOD	< LOD	< LOD	< LOD	< LOD	< LOD	< LOD
Oxytetracycline	< LOD	< LOD	< LOD	< LOD	< LOD	< LOD	< LOD	43,817	< LOD	< LOD	< LOD	< LOD
<i>N</i> -Acetyl sulfamethoxazole (M)	< LOD	< LOD	< LOD	< LOD	< LOD	< LOD	< LOD	< LOD	< LOD	< LOD	< LOD	< LOD
Sulfadiazine	< LOD	< LOD	145.4	< LOD	< LOD	< LOD	< LOD	1,092	< LOD	411.3	339.3	< LOD
Sulfamethazine	< LOD	< LOD	< LOD	< LOD	< LOD	< LOD	< LOD	< LOD	< LOD	< LOD	< LOD	< LOD
Sulfamethizole	< LOD	< LOD	< LOD	< LOD	< LOD	< LOD	< LOD	< LOD	< LOD	< LOD	< LOD	< LOD
Sulfamethoxazole	< LOD	< LOD	< LOD	< LOD	< LOD	< LOD	< LOD	< LOD	< LOD	< LOD	< LOD	< LOD
Sulfamethoxypyridazine	< LOD	< LOD	< LOD	< LOD	< LOD	< LOD	< LOD	< LOD	< LOD	< LOD	< LOD	< LOD
Sulfapyridine	< LOD	< LOD	< LOD	< LOD	< LOD	< LOD	< LOD	< LOD	< LOD	< LOD	< LOD	< LOD
Sulfaquinoxaline	< LOD	< LOD	< LOD	< LOD	< LOD	< LOD	< LOD	< LOD	< LOD	< LOD	< LOD	< LOD
Sulfathiazole	< LOD	< LOD	< LOD	< LOD	< LOD	< LOD	< LOD	< LOD	< LOD	< LOD	< LOD	< LOD
Trimethoprim	< LOD	< LOD	< LOD	< LOQ	< LOD	< LOD	< LOD	32.6	< LOD	< LOQ	34.2	< LOD
Caffeine	< LOQ	< LOD	< LOQ	< LOQ	< LOQ	< LOQ	< LOD	< LOD	< LOD	< LOD	< LOQ	< LOQ
Paracetamol	< LOD	< LOD	< LOD	< LOD	< LOD	< LOQ	< LOQ	< LOD	< LOD	< LOD	< LOD	< LOD
Phenazone	< LOD	< LOD	< LOD	< LOD	< LOD	< LOD	< LOD	< LOD	< LOD	< LOD	< LOD	< LOD
Carbamazepine	< LOD	< LOD	< LOD	< LOD	< LOD	< LOD	< LOD	< LOD	< LOD	< LOD	< LOD	< LOD
Carbamazepine-10,11-epoxide (M)	< LOD	< LOD	< LOD	< LOD	< LOD	< LOD	< LOD	< LOD	< LOD	< LOD	< LOD	< LOD
Citalopram	< LOD	< LOD	< LOD	< LOD	< LOD	< LOD	< LOD	< LOD	< LOD	< LOD	< LOD	< LOD
Fluoxetine	< LOD	< LOD	< LOD	< LOD	< LOD	< LOD	< LOD	< LOD	< LOD	< LOD	< LOD	< LOD
<i>N</i> -Desmethyl sertraline (M)	< LOD	< LOD	< LOD	< LOD	< LOD	< LOD	< LOD	< LOD	< LOD	< LOD	< LOD	< LOD
Norfluoxetine (M)	< LOD	< LOD	< LOD	< LOD	< LOD	< LOD	< LOD	< LOD	< LOD	< LOD	< LOD	< LOD
<i>O</i> -Desmethyl venlafaxine (M)	< LOD	< LOD	< LOD	< LOD	< LOD	< LOD	< LOD	< LOD	< LOD	< LOD	< LOD	< LOD
Sertraline	< LOD	< LOD	< LOD	< LOD	< LOD	< LOD	< LOD	< LOD	< LOD	< LOD	< LOD	< LOD
Venlafaxine	< LOD	< LOD	< LOD	< LOD	< LOD	< LOD	< LOD	< LOD	< LOD	< LOD	< LOD	< LOD

LOD: limits of detection; LOQ: limits of quantification. Positive findings are given in bold

Table 5. Analytical characteristics of recent work involving SPE extraction and LC-MS techniques for the analysis of pharmaceuticals in surface waters

Samples matrix	Compounds	Sample pretreatment	SPE			LC-MS technique	Recovery (%)	LODs	LOQs	Linearity	References
			Cartridge	Conditioning	Elution						
Seawater	25 PhACs	pH 3 (HCl)	Oasis HLB (200 mg, 6 mL)	5 mL MeOH	2 × 5 mL MeOH	UHPLC-LTQ/Orbitrap MS	61.6–118.8	0.3–9.8 ng L ⁻¹	1.2–26.4 ng L ⁻¹	0.9907	This study
Lake water	13 PPCPs	pH 3 (HCl)	Oasis HLB (500 mg, 6 mL)	5 mL MeOH	MeOH	UHPLC-QqQ/MS	79.4–115.5	-	0.04–4 ng L ⁻¹	-	[11]
				5 mL H ₂ O LC-MS							
Surface water	168 PhACs	pH 3 (HCl)	Oasis HLB (200 mg, 6 mL)	2 × 3 mL MeOH	2 × 2 mL MeOH	LC-MS/MS	77–117	< 0.3 ng L ⁻¹	< 0.1 ng L ⁻¹	0.9900	[52]
		pH 7 (HCl or NH ₄ OH)		2 × 3 mL H ₂ O (pH 3)							
River water	67 PhACs	-	Oasis HLB (200 mg, 6 mL)	3 mL MeOH	2 × 5 mL MeOH	LC-Orbitrap-MS	-	-	-	0.9900	[10]
				3 mL H ₂ O							
River water	33 PPCPs	pH 7	Strata-X (200 mg, 6 mL)	4 mL MeOH	4 mL MeOH	LC-MS/MS	47.9–114	1.3–7 ng L ⁻¹	4–200 ng L ⁻¹	-	[18]
				4 mL H ₂ O							
Surface water	31 ECs	pH 3	Chromabond HR-X (500 mg, 6 mL)	6 mL MeOH	2 × 5 mL MeOH	HPLC-MS/MS	97.1–105.0	0.005–2.5 ng L ⁻¹	0.01–5.0 ng L ⁻¹	0.9954	[88]
				6 mL H ₂ O LC-MS							
Surface water	122 PhACs	pH 6–6.2	Oasis WAX/Oasis HLB/Sep-Pak Plus AC2	6–10 mL MeOH	Different for each cartridge	UPLC-ESI-TQD-MS/MS	50–150	0.0003–1.757 ng L ⁻¹	0.010–5.9102 ng L ⁻¹	> 0.9950	[43]
				6–10 mL H ₂ O ultrapure							
River water	35 PhACs	-	Oasis HLB	6 mL MeOH	6 mL MeOH	HPLC-ESI-MS/MS	3–123	0.2–9.4 ng L ⁻¹	0.5–33 ng L ⁻¹	> 0.9811	[14]
				6 mL H ₂ O HPLC							
Surface water	29 PhACs	-	Oasis HLB (200 mg, 6 mL)	4 mL MeOH	6 mL 1% NH ₄ OH in MeOH	UHPLC-HRMS	62.98–105.74	0.01–2.5 ng L ⁻¹	0.03–8.33 ng L ⁻¹	0.9717	[71]
				6 mL H ₂ O LC-MS							
River water	67 PhACs	pH 3 (CH ₃ COOH)	Strata-X (200 mg, 6 mL)	6 mL MeOH	6 mL MeOH	LC-Q-Orbitrap-HRMS	85–115	0.4–10 ng L ⁻¹	1.5–55 ng L ⁻¹	0.9900	[87]
				6 mL H ₂ O LC-MS							

ECs: emerging contaminants; ESI: Electrospray Ionization; LODs: limits of detection; LOQ: limits of quantification; PhACs: pharmaceutically active compounds; PPCPs: personal care products; SPE: solid phase extraction

who reported a value > 0.97, and Rivera-Jaimes et al. [14], who reported a linearity value > 0.98. Finally, regarding the limits, LODs and LOQs were found to be lower compared to the present work, except for Chaves et al. [18] and Chitescu et al. [87], who reported much higher values. Compared to the rest of the work, the results of this study appear to be satisfactory.

The analysis of real samples in recent works showed the presence of antibiotics in the water samples which is in agreement with the results of the present work. In the present work the highest concentration of oxytetracycline was found in the February sample. However, the presence of antibiotics in fish farms is perfectly reasonable due to their therapeutic use in fish samples. More specifically, Xu et al. [43], detected the antibiotics sulfadiazine and trimethoprim in surface water at concentrations of 0.91 ng L⁻¹ and 1.63 ng L⁻¹, respectively. Chaves et al. [18], and Tran et al. [88], detected paracetamol and caffeine at concentrations of 873.4 ng L⁻¹ and 1,282 ng L⁻¹ and 100.6 ng L⁻¹ and 100.4 ng L⁻¹, respectively. Mhuka et al. [10], detected the substances paracetamol, caffeine, trimethoprim at concentrations of 432.8, 2,979 and 85.32 ng L⁻¹, respectively, while Gros et al. [67], detected paracetamol and trimethoprim in seawater samples at concentrations of 23 ng L⁻¹ and 1 ng L⁻¹. Finally, Asghar et al. [71], in the samples from the Yang and Han rivers and in the lake water from the East Lake detected the substances trimethoprim and caffeine in concentrations of 5.9/32.05 ng L⁻¹ and 8.45/113 ng L⁻¹, respectively.

Challenges and recommendations for future work

Monitoring of pollutants in water can reveal details about the destiny of pharmaceuticals in the environment, such as the processes of transformation, partitioning, and transport, in addition to the goals of the monitoring approach. Therefore, additional research on the behavior, destiny, and toxicity of the parent chemicals and TPs is necessary for such inclusion. With the advancement and complementarity of non-target analysis, the incorporation of metabolites and degradation products into monitoring strategies is crucial and feasible, it would allow for the evaluation of their possible combined ecotoxicological consequences. The identification of priority substances would allow for the connection between the occurrence of contaminants and associated ecological responses through integrated monitoring of the environmental matrices carried out concurrently with the measurement of biomarkers of exposure and effects. It would be possible to create environmental quality standards and/or guidelines for medicines in seawater, sediments, and biota if the data regarding the ecological effects of pharmaceuticals present in the examined environment were to expand. Among the short-term steps that have been suggested to reduce the amount of pharmaceuticals that humans, animals, and ecosystems are exposed to include close monitoring of the chemicals' effects on living things and their environmental presence. Finally, a trade-off must be made between suggested scientific methods and practical and financial limitations.

Abbreviations

AGC: automatic gain control

ECs: emerging contaminants

ESI: electrospray ionization

FA: formic acid

LOD: limits of detection

LOQ: limits of quantification

NCE: normalized collision energy

PE: process efficiency

PhACs: pharmaceutically active compounds

PPCPs: personal care products

PRP: polar-modified reversed phase

RSD_r: repeatability relative standard deviation

RSD_R: reproducibility relative standard deviation

SPE: solid phase extraction

TPs: transformation products

ME: matrix effects

Supplementary materials

The supplementary material for this article is available at: https://www.explorationpub.com/uploads/Article/file/101061_sup_1.pdf.

Declarations

Acknowledgments

This research was co-financed by Greece and the European Union (European Social Fund-ESF) through the Operational Programme «Human Resources Development. Education and Lifelong Learning» in the context of the project “Strengthening Human Resources Research Potential via Doctorate Research” (MIS-

5000432). Implemented by the State Scholarships Foundation (IKY). The authors would like to thank the Unit of Environmental, Organic and Biochemical High-Resolution Analysis-Orbitrap-LC-MS of the University of Ioannina for providing access to the facilities.

Author contributions

AK: Validation, Formal analysis, Investigation, Writing—original draft, Writing—review & editing, Visualization. CK: Methodology, Formal analysis, Visualization, Writing—original draft, Writing—review & editing. TA: Conceptualization, Methodology, Visualization, Supervision, Resources, Funding acquisition.

Conflict of interest

The authors declare no competing interests.

Ethical approval

Not applicable.

Consent to participate

Not applicable.

Consent to publication

Not applicable.

Availability of data and materials

All relevant data is contained within the manuscript.

Funding

This research is co-financed by Greece and the European Union (European Social Fund-ESF) through the Operational Programme “Human Resources Development, Education and Lifelong Learning” in the context of the project “Strengthening Human Resources Research Potential via Doctorate Research” [MIS-5000432]. Implemented by the State Scholarships Foundation (IKY). The funders had no role in study design, data collection and analysis, decision to publish, or preparation of the manuscript.

Copyright

© The Authors 2024.

References

1. Ebele AJ, Abou-Elwafa Abdallah M, Harrad S. Pharmaceuticals and personal care products (PPCPs) in the freshwater aquatic environment. *Emerg Contam.* 2017;3:1–16. [\[DOI\]](#)
2. Boxall AB, Rudd MA, Brooks BW, Caldwell DJ, Choi K, Hickmann S, et al. Pharmaceuticals and personal care products in the environment: what are the big questions? *Environ Health Perspect.* 2012;120:1221–9. [\[DOI\]](#) [\[PubMed\]](#) [\[PMC\]](#)
3. Nikolaou A, Meric S, Fatta D. Occurrence patterns of pharmaceuticals in water and wastewater environments. *Anal Bioanal Chem.* 2007;387:1225–34. [\[DOI\]](#) [\[PubMed\]](#)
4. Kosma CI, Lambropoulou DA, Albanis TA. Investigation of PPCPs in wastewater treatment plants in Greece: occurrence, removal and environmental risk assessment. *Sci Total Environ.* 2014;466-467:421–38. [\[DOI\]](#) [\[PubMed\]](#)
5. Robles-Molina J, Lara-Ortega FJ, Gilbert-López B, García-Reyes JF, Molina-Díaz A. Multi-residue method for the determination of over 400 priority and emerging pollutants in water and wastewater by solid-phase extraction and liquid chromatography-time-of-flight mass spectrometry. *J Chromatogr A.* 2014;1350:30–43. [\[DOI\]](#) [\[PubMed\]](#)

6. Liu JL, Wong MH. Pharmaceuticals and personal care products (PPCPs): A review on environmental contamination in China. *Environ Int.* 2013;59:208–24. [\[DOI\]](#)
7. Sosa-Ferrera Z, Mahugo-Santana C, Santana-Rodríguez JJ. New Developments in Liquid Chromatography Mass Spectrometry for the Determination of Micropollutants. *Chromatogr Res Int.* 2012;2012:748989. [\[DOI\]](#)
8. Daughton CG. Non-regulated water contaminants: Emerging research. *Environ Impact Assess Rev.* 2004;24:711–32. [\[DOI\]](#)
9. Daughton CG, Ternes TA. Pharmaceuticals and personal care products in the environment: agents of subtle change? *Environ Health Perspect.* 1999;107 Suppl 6:907–38. [\[DOI\]](#) [\[PubMed\]](#) [\[PMC\]](#)
10. Mhuka V, Dube S, Nindi MM. Occurrence of pharmaceutical and personal care products (PPCPs) in wastewater and receiving waters in South Africa using LC-Orbitrap™ MS. *Emerg Contam.* 2020;6: 250–8. [\[DOI\]](#)
11. Cao SS, Duan YP, Tu YJ, Tang Y, Liu J, Zhi WD, et al. Pharmaceuticals and personal care products in a drinking water resource of Yangtze River Delta Ecology and Greenery Integration Development Demonstration Zone in China: Occurrence and human health risk assessment. *Sci Total Environ.* 2020; 721:137624. [\[DOI\]](#)
12. Martín-Pozo L, de Alarcón-Gómez B, Rodríguez-Gómez R, García-Córcoles MT, Çipa M, Zafra-Gómez A. Analytical methods for the determination of emerging contaminants in sewage sludge samples. A review. *Talanta.* 2019;192:508–33. [\[DOI\]](#)
13. Koba O, Grabicova K, Cervený D, Turek J, Kolarova J, Randak T, et al. Transport of pharmaceuticals and their metabolites between water and sediments as a further potential exposure for aquatic organisms. *J Hazard Mater.* 2018;342:401–7. [\[DOI\]](#)
14. Rivera-Jaimes JA, Postigo C, Melgoza-Alemán RM, Aceña J, Barceló D, López de Alda M. Study of pharmaceuticals in surface and wastewater from Cuernavaca, Morelos, Mexico: Occurrence and environmental risk assessment. *Sci Total Environ.* 2018;613-614:1263–74. [\[DOI\]](#) [\[PubMed\]](#)
15. Wang J, Wang S. Removal of pharmaceuticals and personal care products (PPCPs) from wastewater: A review. *J Environ Manage.* 2016;182:620–40. [\[DOI\]](#)
16. Nannou CI, Kosma CI, Albanis TA. Occurrence of pharmaceuticals in surface waters: analytical method development and environmental risk assessment. *Int J Environ Anal Chem.* 2015;95:1242–62. [\[DOI\]](#)
17. Zenker A, Cicero MR, Prestinaci F, Bottoni P, Carere M. Bioaccumulation and biomagnification potential of pharmaceuticals with a focus to the aquatic environment. *J Environ Manage.* 2014;133: 378–87. [\[DOI\]](#)
18. Chaves MdJ, Barbosa SC, de Melo Malinowski M, Volpato D, Castro ÍB, Franco TCRdS, et al. Pharmaceuticals and personal care products in a Brazilian wetland of international importance: Occurrence and environmental risk assessment. *Sci Total Environ.* 2020;734:139374. [\[DOI\]](#)
19. Kosma CI, Kapsi MG, Konstas PG, Trantopoulos EP, Boti VI, Konstantinou IK, et al. Assessment of multiclass pharmaceutical active compounds (PhACs) in hospital WWTP influent and effluent samples by UHPLC-Orbitrap MS: Temporal variation, removals and environmental risk assessment. *Environ Res.* 2020;191:110152. [\[DOI\]](#) [\[PubMed\]](#) [\[PMC\]](#)
20. Letsinger S, Kay P, Rodríguez-Mozaz S, Villagrassa M, Barceló D, Rotchell JM. Spatial and temporal occurrence of pharmaceuticals in UK estuaries. *Sci Total Environ.* 2019;678:74–84. [\[DOI\]](#)
21. Konstas PS, Kosma C, Konstantinou I, Albanis T. Photocatalytic Treatment of Pharmaceuticals in Real Hospital Wastewaters for Effluent Quality Amelioration. *Water.* 2019;11:2165. [\[DOI\]](#)
22. Krakkó D, Licul-Kucera V, Záray G, Mihucz VG. Single-run ultra-high performance liquid chromatography for quantitative determination of ultra-traces of ten popular active pharmaceutical ingredients by quadrupole time-of-flight mass spectrometry after offline preconcentration by solid phase extraction. *Microchem J.* 2019;148:108–19. [\[DOI\]](#)

23. Wang Y, Li Y, Hu A, Rashid A, Ashfaq M, Wang Y, et al. Monitoring, mass balance and fate of pharmaceuticals and personal care products in seven wastewater treatment plants in Xiamen City, China. *J Hazard Mater.* 2018;354:81–90. [\[DOI\]](#)
24. Valdés ME, Huerta B, Wunderlin DA, Bistoni MA, Barceló D, Rodríguez-Mozaz S. Bioaccumulation and bioconcentration of carbamazepine and other pharmaceuticals in fish under field and controlled laboratory experiments. Evidences of carbamazepine metabolization by fish. *Sci Total Environ.* 2016; 557-558:58–67. [\[DOI\]](#) [\[PubMed\]](#)
25. Pereira AMPT, Silva LJG, Meisel LM, Lino CM, Pena A. Environmental impact of pharmaceuticals from Portuguese wastewaters: Geographical and seasonal occurrence, removal and risk assessment. *Environ Res.* 2015;136:108–19. [\[DOI\]](#)
26. Sauvé S, Desrosiers M. A review of what is an emerging contaminant. *Chem Cent J.* 2014;8:15. [\[DOI\]](#) [\[PubMed\]](#) [\[PMC\]](#)
27. Huerta B, Jakimska A, Gros M, Rodríguez-Mozaz S, Barceló D. Analysis of multi-class pharmaceuticals in fish tissues by ultra-high-performance liquid chromatography tandem mass spectrometry. *J Chromatogr A.* 2013;1288:63–72. [\[DOI\]](#)
28. Beyer J, Jonsson G, Porte C, Krahn MM, Ariese F. Analytical methods for determining metabolites of polycyclic aromatic hydrocarbon (PAH) pollutants in fish bile: A review. *Environ Toxicol Pharmacol.* 2010;30:224–44. [\[DOI\]](#)
29. Verweij F, Booij K, Satumalay K, van der Molen N, van der Oost R. Assessment of bioavailable PAH, PCB and OCP concentrations in water, using semipermeable membrane devices (SPMDs), sediments and caged carp. *Chemosphere.* 2004;54:1675–89. [\[DOI\]](#) [\[PubMed\]](#)
30. Kalogeropoulou AG, Kosma CI, Albanis TA. Simultaneous determination of pharmaceuticals and metabolites in fish tissue by QuEChERS extraction and UHPLC Q/Orbitrap MS analysis. *Anal Bioanal Chem.* 2021;413:7129–40. [\[DOI\]](#) [\[PubMed\]](#)
31. Poirier Larabie S, Houde M, Gagnon C. Determination of the bioavailability of selected pharmaceutical residues in fish plasma using liquid chromatography coupled to tandem mass spectrometry. *J Chromatogr A.* 2017;1522:48–55. [\[DOI\]](#)
32. Andrés-Costa MJ, Rubio-López N, Morales Suárez-Varela M, Pico Y. Occurrence and removal of drugs of abuse in Wastewater Treatment Plants of Valencia (Spain). *Environ Pollut.* 2014;194:152–62. [\[DOI\]](#) [\[PubMed\]](#)
33. Campo J, Masiá A, Picó Y, Farré M, Barceló D. Distribution and fate of perfluoroalkyl substances in Mediterranean Spanish sewage treatment plants. *Sci Total Environ.* 2014;472:912–22. [\[DOI\]](#) [\[PubMed\]](#)
34. Carmona E, Andreu V, Picó Y. Occurrence of acidic pharmaceuticals and personal care products in Turia River Basin: From waste to drinking water. *Sci Total Environ.* 2014;484:53–63. [\[DOI\]](#)
35. da Silva BF, Jelic A, López-Serna R, Mozeto AA, Petrovic M, Barceló D. Occurrence and distribution of pharmaceuticals in surface water, suspended solids and sediments of the Ebro river basin, Spain. *Chemosphere.* 2011;85:1331–9. [\[DOI\]](#)
36. Bolong N, Ismail AF, Salim MR, Matsuura T. A review of the effects of emerging contaminants in wastewater and options for their removal. *Desalination.* 2009;239:229–46. [\[DOI\]](#)
37. Semreen MH, Shanableh A, Semerjian L, Alniss H, Mousa M, Bai X, et al. Simultaneous Determination of Pharmaceuticals by Solid-phase Extraction and Liquid Chromatography-Tandem Mass Spectrometry: A Case Study from Sharjah Sewage Treatment Plant. *Molecules.* 2019;24:633. [\[DOI\]](#) [\[PubMed\]](#) [\[PMC\]](#)
38. Thelusmond JR, Kawka E, Strathmann TJ, Cupples AM. Diclofenac, carbamazepine and triclocarban biodegradation in agricultural soils and the microorganisms and metabolic pathways affected. *Sci Total Environ.* 2018;640-641:1393–410. [\[DOI\]](#) [\[PubMed\]](#)
39. Schaidler LA, Rudel RA, Ackerman JM, Dunagan SC, Brody JG. Pharmaceuticals, perfluorosurfactants, and other organic wastewater compounds in public drinking water wells in a shallow sand and gravel aquifer. *Sci Total Environ.* 2014;468–469:384–93. [\[DOI\]](#)

40. Middleton JH, Salierno JD. Antibiotic resistance in triclosan tolerant fecal coliforms isolated from surface waters near wastewater treatment plant outflows (Morris County, NJ, USA). *Ecotoxicol Environ Saf.* 2013;88:79–88. [DOI]
41. Gao P, Mao D, Luo Y, Wang L, Xu B, Xu L. Occurrence of sulfonamide and tetracycline-resistant bacteria and resistance genes in aquaculture environment. *Water Res.* 2012;46:2355–64. [DOI]
42. Zheng Q, Zhang R, Wang Y, Pan X, Tang J, Zhang G. Occurrence and distribution of antibiotics in the Beibu Gulf, China: Impacts of river discharge and aquaculture activities. *Mar Environ Res.* 2012;78: 26–33. [DOI]
43. Xu M, Huang H, Li N, Li F, Wang D, Luo Q. Occurrence and ecological risk of pharmaceuticals and personal care products (PPCPs) and pesticides in typical surface watersheds, China. *Ecotoxicol Environ Saf.* 2019;175:289–98. [DOI] [PubMed]
44. Zhang J, Zhang J, Liu R, Gan J, Liu J, Liu W. Endocrine-Disrupting Effects of Pesticides through Interference with Human Glucocorticoid Receptor. *Environ Sci Technol.* 2016;50:435–43. [DOI] [PubMed]
45. Hussain I, Khan MZ, Khan A, Javed I, Saleemi MK. Toxicological effects of diclofenac in four avian species. *Avian Pathol.* 2008;37:315–21. [DOI] [PubMed]
46. Fent K, Weston AA, Caminada D. Ecotoxicology of human pharmaceuticals. *Aquat Toxicol.* 2006;76: 122–59. [DOI] [PubMed]
47. Mendoza A, López de Alda M, González-Alonso S, Mastroianni N, Barceló D, Valcárcel Y. Occurrence of drugs of abuse and benzodiazepines in river waters from the Madrid Region (Central Spain). *Chemosphere.* 2014;95:247–55. [DOI]
48. Baynes A, Green C, Nicol E, Beresford N, Kanda R, Henshaw A, et al. Additional treatment of wastewater reduces endocrine disruption in wild fish--a comparative study of tertiary and advanced treatments. *Environ Sci Technol.* 2012;46:5565–73. [DOI] [PubMed]
49. Bevans HE, Goodbred SL, Miesner JF, Watkins SA, Gross TS, Denslow ND, et al. Synthetic organic compounds and carp endocrinology and histology, Las Vegas Wash and Las Vegas and Callville Bays of Lake Mead, Nevada, 1992 and 1995. *U.S. Dep Inter Geol Surv - Water-Resources Investig Rep.* 1996; 1–12.
50. Harries JE, Sheahan DA, Matthiessen P, Neall P, Rycroft R, Tylor T, et al. A survey of estrogenic activity in United Kingdom inland waters. *Environ Toxicol Chem.* 1996;15:1993–2002. [DOI]
51. Kosma CI, Nannou CI, Boti VI, Albanis TA. Psychiatric and selected metabolites in hospital and urban wastewaters: Occurrence, removal, mass loading, seasonal influence and risk assessment. *Sci Total Environ.* 2019;659:1473–83. [DOI] [PubMed]
52. Zhang Y, Duan L, Wang B, Liu CS, Jia Y, Zhai N, et al. Efficient multiresidue determination method for 168 pharmaceuticals and metabolites: Optimization and application to raw wastewater, wastewater effluent, and surface water in Beijing, China. *Environ Pollut.* 2020;261:114113. [DOI]
53. Ondarza PM, Haddad SP, Avigliano E, Miglioranza KSB, Brooks BW. Pharmaceuticals, illicit drugs and their metabolites in fish from Argentina: Implications for protected areas influenced by urbanization. *Sci Total Environ.* 2019;649:1029–37. [DOI]
54. Carmona E, Andreu V, Picó Y. Multi-residue determination of 47 organic compounds in water, soil, sediment and fish—Turia River as case study. *J Pharm Biomed Anal.* 2017;146:117–25. [DOI]
55. Núñez M, Borrull F, Pocurull E, Fontanals N. Sample treatment for the determination of emerging organic contaminants in aquatic organisms. *TrAC - Trends Anal Chem.* 2017;97:136–45. [DOI]
56. Mottaleb MA, Stowe C, Johnson DR, Meziani MJ, Mottaleb MA. Pharmaceuticals in grocery market fish fillets by gas chromatography-mass spectrometry. *Food Chem.* 2016;190:529–36. [DOI]
57. Ramirez AJ, Brain RA, Usenko S, Mottaleb MA, O'Donnell JG, Stahl LL, et al. Occurrence of pharmaceuticals and personal care products in fish: results of a national pilot study in the United States. *Environ Toxicol Chem.* 2009;28:2587–97. [DOI] [PubMed]

58. Petrie B, Barden R, Kasprzyk-Hordern B. A review on emerging contaminants in wastewaters and the environment: Current knowledge, understudied areas and recommendations for future monitoring. *Water Res.* 2015;72:3–27. [DOI]
59. Vazquez-Roig P, Blasco C, Picó Y. Advances in the analysis of legal and illegal drugs in the aquatic environment. *TrAC - Trends Anal Chem.* 2013;50:65–77. [DOI]
60. Khan AHA, Barros R. Pharmaceuticals in Water: Risks to Aquatic Life and Remediation Strategies. *Hydrobiology.* 2023;2:395–409. [DOI]
61. Alygizakis NA, Gago-Ferrero P, Borova VL, Pavlidou A, Hatzianestis I, Thomaidis NS. Occurrence and spatial distribution of 158 pharmaceuticals, drugs of abuse and related metabolites in offshore seawater. *Sci Total Environ.* 2016;541:1097–105. [DOI]
62. Dasenaki ME, Thomaidis NS. Multianalyte method for the determination of pharmaceuticals in wastewater samples using solid-phase extraction and liquid chromatography-tandem mass spectrometry. *Anal Bioanal Chem.* 2015;407:4229–45. [DOI] [PubMed]
63. Gago-Ferrero P, Borova V, Dasenaki ME, Thomaidis NS. Simultaneous determination of 148 pharmaceuticals and illicit drugs in sewage sludge based on ultrasound-assisted extraction and liquid chromatography-tandem mass spectrometry. *Anal Bioanal Chem.* 2015;407:4287–97. [DOI] [PubMed]
64. Kosma CI, Lambropoulou DA, Albanis TA. Occurrence and removal of PPCPs in municipal and hospital wastewaters in Greece. *J Hazard Mater.* 2010;179:804–17. [DOI] [PubMed]
65. Kosma CI, Lambropoulou DA, Albanis TA. Comprehensive study of the antidiabetic drug metformin and its transformation product guanylurea in Greek wastewaters. *Water Res.* 2015;70:436–48. [DOI] [PubMed]
66. Kim C, Ryu HD, Chung EG, Kim Y, Lee J. A review of analytical procedures for the simultaneous determination of medically important veterinary antibiotics in environmental water: Sample preparation, liquid chromatography, and mass spectrometry. *J Environ Manage.* 2018;217:629–45. [DOI]
67. Gros M, Rodríguez-Mozaz S, Barceló D. Fast and comprehensive multi-residue analysis of a broad range of human and veterinary pharmaceuticals and some of their metabolites in surface and treated waters by ultra-high-performance liquid chromatography coupled to quadrupole-linear ion trap tandem. *J Chromatogr A.* 2012;1248:104–21. [DOI]
68. Lavén M, Alsberg T, Yu Y, Adolfsson-Erici M, Sun H. Serial mixed-mode cation- and anion-exchange solid-phase extraction for separation of basic, neutral and acidic pharmaceuticals in wastewater and analysis by high-performance liquid chromatography-quadrupole time-of-flight mass spectrometry. *J Chromatogr A.* 2009;1216:49–62. [DOI] [PubMed]
69. Bueno MJ, Agüera A, Gómez MJ, Hernando MD, García-Reyes JF, Fernandez-Alba AR. Application of liquid chromatography/quadrupole-linear Ion trap mass spectrometry and time-of-flight mass spectrometry to the determination of pharmaceuticals and related contaminants in wastewater. *Anal Chem.* 2007;79:9372–84. [DOI] [PubMed]
70. Petrovic M, Gros M, Barcelo D. Multi-residue analysis of pharmaceuticals in wastewater by ultra-performance liquid chromatography-quadrupole-time-of-flight mass spectrometry. *J Chromatogr A.* 2006;1124:68–81. [DOI] [PubMed]
71. Asghar MA, Zhu Q, Sun S, Peng Y, Shuai Q. Suspect screening and target quantification of human pharmaceutical residues in the surface water of Wuhan, China, using UHPLC-Q-Orbitrap HRMS. *Sci Total Environ.* 2018;635:828–37. [DOI]
72. Huysman S, Van Meulebroek L, Vanryckeghem F, Van Langenhove H, Demeestere K, Vanhaecke L. Development and validation of an ultra-high performance liquid chromatographic high resolution Q-Orbitrap mass spectrometric method for the simultaneous determination of steroidal endocrine disrupting compounds in aquatic matrices. *Anal Chim Acta.* 2017;984:140–50. [DOI]

73. Pugajeva I, Rusko J, Perkons I, Lundanes E, Bartkevics V. Determination of pharmaceutical residues in wastewater using high performance liquid chromatography coupled to quadrupole-Orbitrap mass spectrometry. *J Pharm Biomed Anal.* 2017;133:64–74. [DOI]
74. Bijlsma L, Emke E, Hernández F, de Voogt P. Performance of the linear ion trap Orbitrap mass analyzer for qualitative and quantitative analysis of drugs of abuse and relevant metabolites in sewage water. *Anal Chim Acta.* 2013;768:102–10. [DOI]
75. Branchet P, Arpin-Pont L, Piram A, Boissery P, Wong-Wah-Chung P, Doumenq P. Pharmaceuticals in the marine environment: What are the present challenges in their monitoring? *Sci Total Environ.* 2021;766:142644. [DOI]
76. Pihlström T, Fernández-Alba AR, Amate CF, Poulsen ME, Hardebusch B, Anastassiades M. Analytical quality control and method validation procedures for pesticide residues analysis in food and feed SANTE 11312/2021 v2 [Internet]. [Cited 2024 Jun 27]. Available from: https://food.ec.europa.eu/system/files/2023-11/pesticides_mrl_guidelines_wrkdoc_2021-11312.pdf
77. Scordo CVA, Checchini L, Renai L, Orlandini S, Bruzzoniti MC, Fibbi D, et al. Optimization and validation of a method based on QuEChERS extraction and liquid chromatographic-tandem mass spectrometric analysis for the determination of perfluoroalkyl acids in strawberry and olive fruits, as model crops with different matrix characteristics. *J Chromatogr A.* 2020;1621:461038. [DOI] [PubMed]
78. Ferreira JA, Talamine V, Facco JF, Rizzetti TM, Ferreira JMS, Oliveira FA, et al. Determination of pesticide residues in coconut tree trunks by modified QuEChERS method and ultra-high-performance liquid chromatography coupled to triple quadrupole tandem mass spectrometry. *Anal Methods.* 2015;7:4237–45. [DOI]
79. Huerta B, Jakimska A, Llorca M, Ruhí A, Margoutidis G, Acuña V, et al. Development of an extraction and purification method for the determination of multi-class pharmaceuticals and endocrine disruptors in freshwater invertebrates. *Talanta.* 2015;132:373–81. [DOI]
80. Nannou CI, Boti VI, Albanis TA. Trace analysis of pesticide residues in sediments using liquid chromatography-high-resolution Orbitrap mass spectrometry. *Anal Bioanal Chem.* 2018;410:1977–89. [DOI] [PubMed]
81. de Oliveira Arias JL, Rombaldi C, Caldas SS, Primel EG. Alternative sorbents for the dispersive solid-phase extraction step in quick, easy, cheap, effective, rugged and safe method for extraction of pesticides from rice paddy soils with determination by liquid chromatography tandem mass spectrometry. *J Chromatogr A.* 2014;1360:66–75. [DOI]
82. Łozowicka B, Rutkowska E, Jankowska M. Influence of QuEChERS modifications on recovery and matrix effect during the multi-residue pesticide analysis in soil by GC/MS/MS and GC/ECD/NPD. *Environ Sci Pollut Res Int.* 2017;24:7124–38. [DOI] [PubMed] [PMC]
83. Lalumera GM, Calamari D, Galli P, Castiglioni S, Crosa G, Fanelli R. Preliminary investigation on the environmental occurrence and effects of antibiotics used in aquaculture in Italy. *Chemosphere.* 2004;54:661–8. [DOI] [PubMed]
84. Liu H, Huang X, Yu X, Pu C, Sun Y, Luo W. Dissipation and persistence of sulfonamides, quinolones and tetracyclines in anaerobically digested biosolids and compost during short-term storage under natural conditions. *Sci Total Environ.* 2019;684:58–66. [DOI]
85. Kalaboka M, Chrimatopoulos C, Jiménez-Holgado C, Boti V, Sakkas V, Albanis T. Exploring the efficiency of UHPLC-orbitrap ms for the determination of 20 pharmaceuticals and acesulfame k in hospital and urban wastewaters with the aid of FPSE. *Separations.* 2020;7:46. [DOI]
86. Padilla-Sánchez JA, Plaza-Bolaños P, Romero-González R, Grande-Martínez A, Thurman EM, Garrido-Frenich A. Innovative determination of polar organophosphonate pesticides based on high-resolution Orbitrap mass spectrometry. *J Mass Spectrom.* 2012;47:1458–65. [DOI] [PubMed]

87. Chitescu CL, Kaklamanos G, Nicolau AI, Stolker AAML. High sensitive multiresidue analysis of pharmaceuticals and antifungals in surface water using U-HPLC-Q-Exactive Orbitrap HRMS. Application to the Danube river basin on the Romanian territory. *Sci Total Environ.* 2015;532:501–11. [\[DOI\]](#)
88. Tran NH, Hoang L, Nghiem LD, Nguyen NMH, Ngo HH, Guo W, et al. Occurrence and risk assessment of multiple classes of antibiotics in urban canals and lakes in Hanoi, Vietnam. *Sci Total Environ.* 2019; 692:157–74. [\[DOI\]](#)